



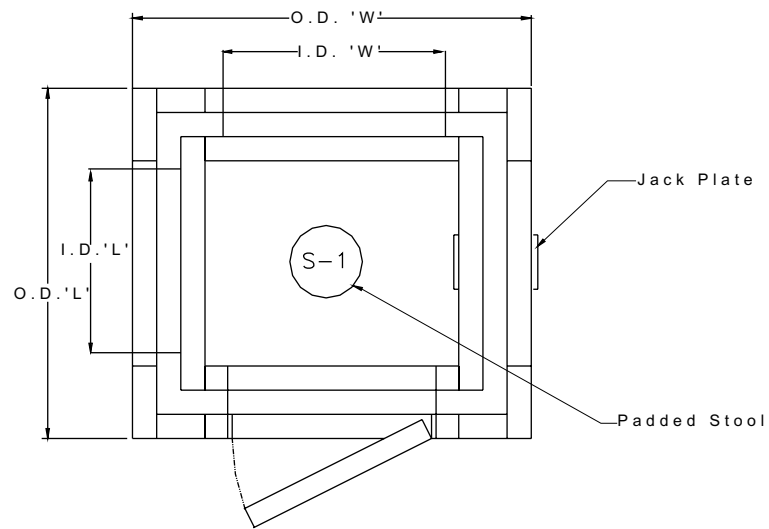
# AccuTONE<sup>2</sup>

## AUDIOMETRIC BOOTHS

The 120m/multi-man Series **Double-Wall** (individual room) construction is a single or multiple occupancy room constructed of 4 inch thick modular panels, complete with carpeted vibration isolated floor, space-saver roof mounted ventilation, recessed electrical, **Noise-Lock**<sup>®</sup> doors and double glazed windows, audiometric jack panels acoustically matched and shipped ready for field installation.



**120m Series**



**Typical Plan**

Model No.	Inside Dimension LxWxH			Outside Dimension LxWxH			Weight lbs
	Ft - In	x Ft - In	x Ft - In	Ft - In	x Ft - In	x Ft - In	
120m-1	2 - 10	x 3 - 6	x 6 - 6	4 - 10	x 5 - 6	x 8 - 1	2300
120m-2	3 - 6	x 6 - 8	x 6 - 6	5 - 6	x 8 - 8	x 8 - 1	3981
120m-4	6 - 2	x 6 - 2	x 6 - 6	8 - 2	x 8 - 2	x 8 - 1	5338
120m-6	6 - 2	x 7 - 6	x 6 - 6	8 - 2	x 9 - 6	x 8 - 1	6130
120m-8	6 - 2	x 8 - 8	x 6 - 6	8 - 2	x 10 - 8	x 8 - 1	6823
120m-10	6 - 2	x 8 - 8	x 6 - 6	8 - 2	x 10 - 8	x 8 - 1	8109

**INDUSTRIAL ACOUSTICS COMPANY, INC.**  
*IAC...is Making the World a Quieter Place!*

**120m Series Audiometric Booths**

**120m GENERAL NOTES:**

1. **TOTAL ESTIMATED DESIGN WEIGHT:** ( ) LBS.
2. **PANEL CONSTRUCTION:** NOISELOCK V (INNER WALLS), NOISELOCK IV (OUTER WALLS AND OUTER CEILING) AND NOISELOCK VI (INNER CEILING)  
**INTERIOR SURFACES:** 22GA. GALVANIZED STUCCO EMBOSSED PERFORATED STEEL  
**EXTERIOR SURFACES:** 14GA. COLD ROLLED STUCCO EMBOSSED SOLID STEEL  
**FLOOR INTERIOR SURFACE:** 11GA. HOT ROLLED STEEL
3. **FINISH:** BAKED ACRYLIC ENAMEL PAINT  
**COLOR:** CHOICE OF (10) STANDARDS
4. **FLOOR COVERING:** INDUSTRIAL NYLON CARPET  
**COLOR:** (TO MATCH PAINT COLOR SELECTION)  
3/8" THICK UNDERLAYMENT AND 2 1/2" H BLACK COVE BASE MOLDING INCLUDED.
5. **DOOR:** (1) 2' X 9" WIDE X 6' - 11 1/2" HIGH CLEAR OPENING CAM-LIFT SPLIT-FRAME WITH 1' 4" W X 2' 0" H ALUMINUM FRAME DOUBLE GLAZED WINDOW, PUSH PLATE AND PULL HANDLES.  
**NOTE:** A. DIMENSIONS LOCATING DOOR ARE SHOWN TO THE CLEAR OPENING  
B. SINGLE OUTSWINGING STC 64 DOOR STANDARD. ALTERNATE FOR LARGER BOOTHS IS COMBINATION OF ONE OUTSWINGING AND ONE INSWINGING STC 51 DOORS.
6. VIBRATION ISOLATOR RAILS TO BE PROVIDED BELOW FLOOR PANELS.
7. 2" MINIMUM CLEARANCE IS REQUIRED BETWEEN THE EXTERIOR OF TESTING BOOTH AND HOST FACILITY WALLS/CEILING.
8. DIVIDER CURTAINS AND STOOLS PROVIDED FOR EACH STATION.
9. DUST SEAL TO BE PROVIDED WITHIN AIR SPACE AROUND DOORS AND WINDOWS. SILL ANGLE TO BE PROVIDED BETWEEN DOORS.
10. **LARGEST PANEL SIZE:** ( ) WIDE X ( ) LONG X ( ) THICK. CUSTOMER TO ENSURE ADEQUATE SITE ACCESS.
11. **VENTILATION:** ( ) CFM SYSTEM COMPRISED OF INTEGRATED SPASAVER EXHAUST/INLET AIR CEILING SILENCER PANELS AND 120V, 60HZ, 14W FANS.
12. **ELECTRICAL:**  
( ) 120V RECESSED INCANDESCENT LIGHT FIXTURE  
(2) 120V TOGGLE SWITCH FOR FANS AND LIGHTS  
(1) 120V QUAD RECEPTACLE WITH POWER CORD (ROOF MOUNTED)  
(1) AUDIOMETRIC JACK NETWORK COMPRISED OF:  
(1) MASTER JACK PLATE WITH ( ) SWITCHCRAFT #112B 3-CONDUCTOR JACKS (EXTERIOR)  
( ) STATION JACK PLATES WITH (3) SWITCHCRAFT #112B 3-CONDUCTOR JACKS (INTERIOR)  
(LOT) BOXES, CONNECTORS, CABLE, WIREMOLD, ETC. AS REQUIRED FOR COMPLETE INSTALLATION  
**NOTE:**  
A. CUSTOMER TO PROVIDE 110V, 60 HZ, 20 AMP POWER TO ROOF MOUNTED QUAD RECEPTACLE POWER CORD.  
B. ALL ELECTRICAL IS WIRED PER 2002 NATIONAL ELECTRIC CODE  
C. BOOTH IS FACTORY UL CERTIFIED AND LABELED
13. CUSTOMER TO PROVIDE A FINISHED FLOOR WHICH IS WITHIN +/- 1/4" OF LEVEL IN 10 NON-CUMULATIVE FEET.



**INDUSTRIAL ACOUSTICS COMPANY, INC.**

1160 commerce Ave, Bronx, New York 10462-5599 USA

Tel: 718-931-8000 / Fax: 718-863-1138

Website: [www.industrialacoustics.com](http://www.industrialacoustics.com)

E-mail: [info@industrialacoustics.com](mailto:info@industrialacoustics.com)

UK: Winchester, Hampshire Germany: Niederkruchten